

# Addiction

# Structure

1.1 Type of drugs and their effects

1.2 Alcohol addiction

1.3 Smoking and nicotine addiction

2.1 How to help

2.2 Activity

# 1.1 Type of drugs and their effects

## 1. Get high

– e.g. cocaine, crack, ecstasy, speed, tobacco.

## 2. Calm down

– e.g. alcohol, cannabis, gases, glues and aerosols.

## 3. Trip out

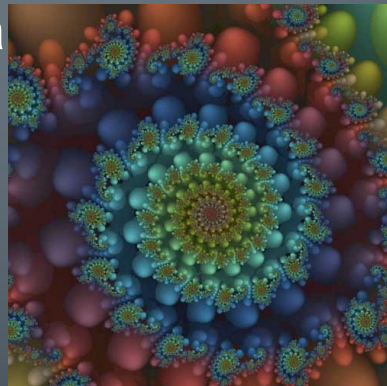
– e.g. cannabis, ketamine, LSD, magic mushrooms.

## 4. Get knocked out

– e.g. heroin.



00, ca



asy

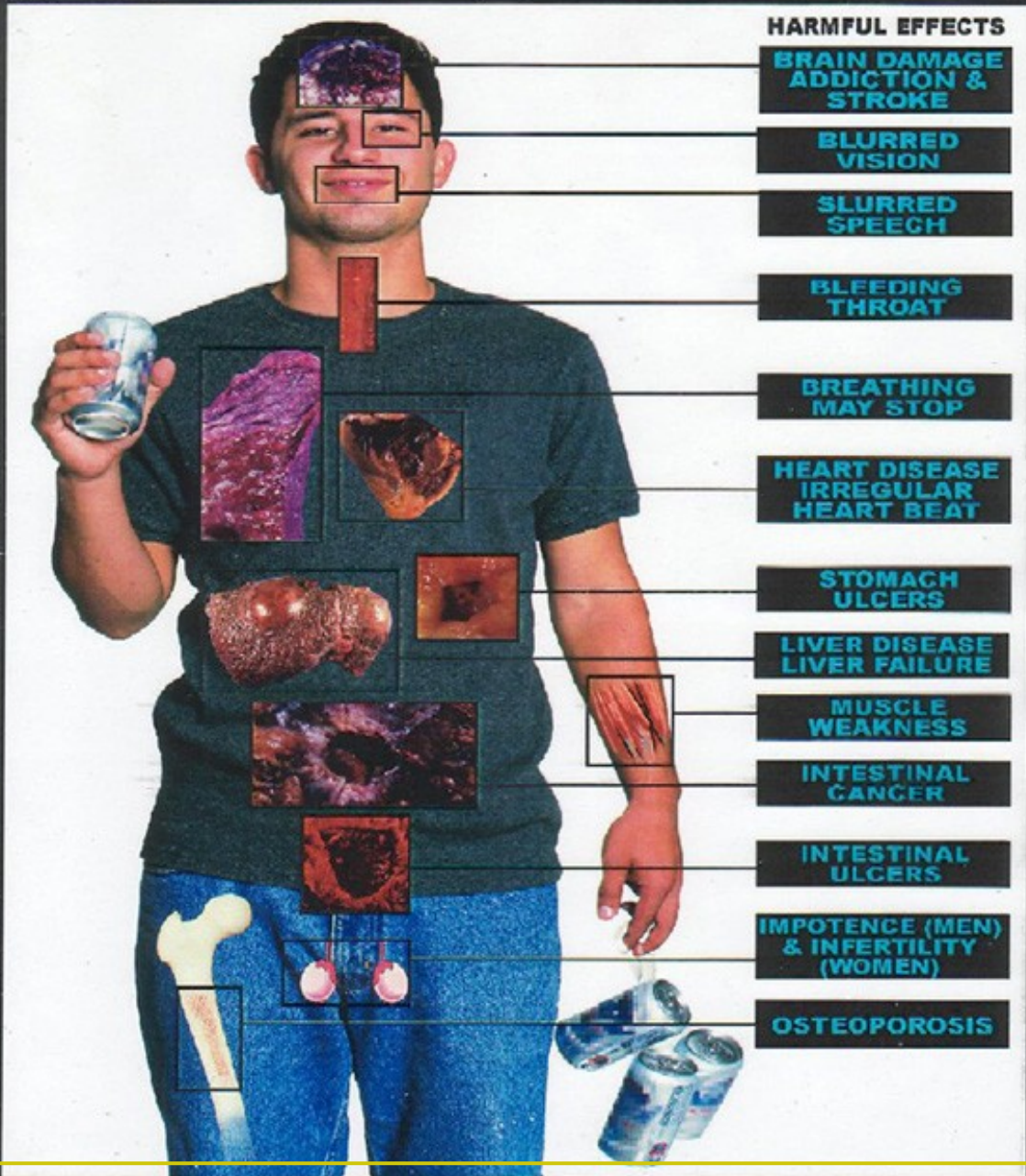


## 1.2 Alcohol addiction

- - effects of many drugs and anaesthetics
- - 0,04 per mile of alcohol
- - in Czech republic almost 550 000 addicted people (2011)
  - 25% men, 10% women



# ALCOHOL



## HARMFUL EFFECTS

**BRAIN DAMAGE  
ADDICTION &  
STROKE**

**BLURRED  
VISION**

**SLURRED  
SPEECH**

**BLEEDING  
THROAT**

**BREATHING  
MAY STOP**

**HEART DISEASE  
IRREGULAR  
HEART BEAT**

**STOMACH  
ULCERS**

**LIVER DISEASE  
LIVER FAILURE**

**MUSCLE  
WEAKNESS**

**INTESTINAL  
CANCER**

**INTESTINAL  
ULCERS**

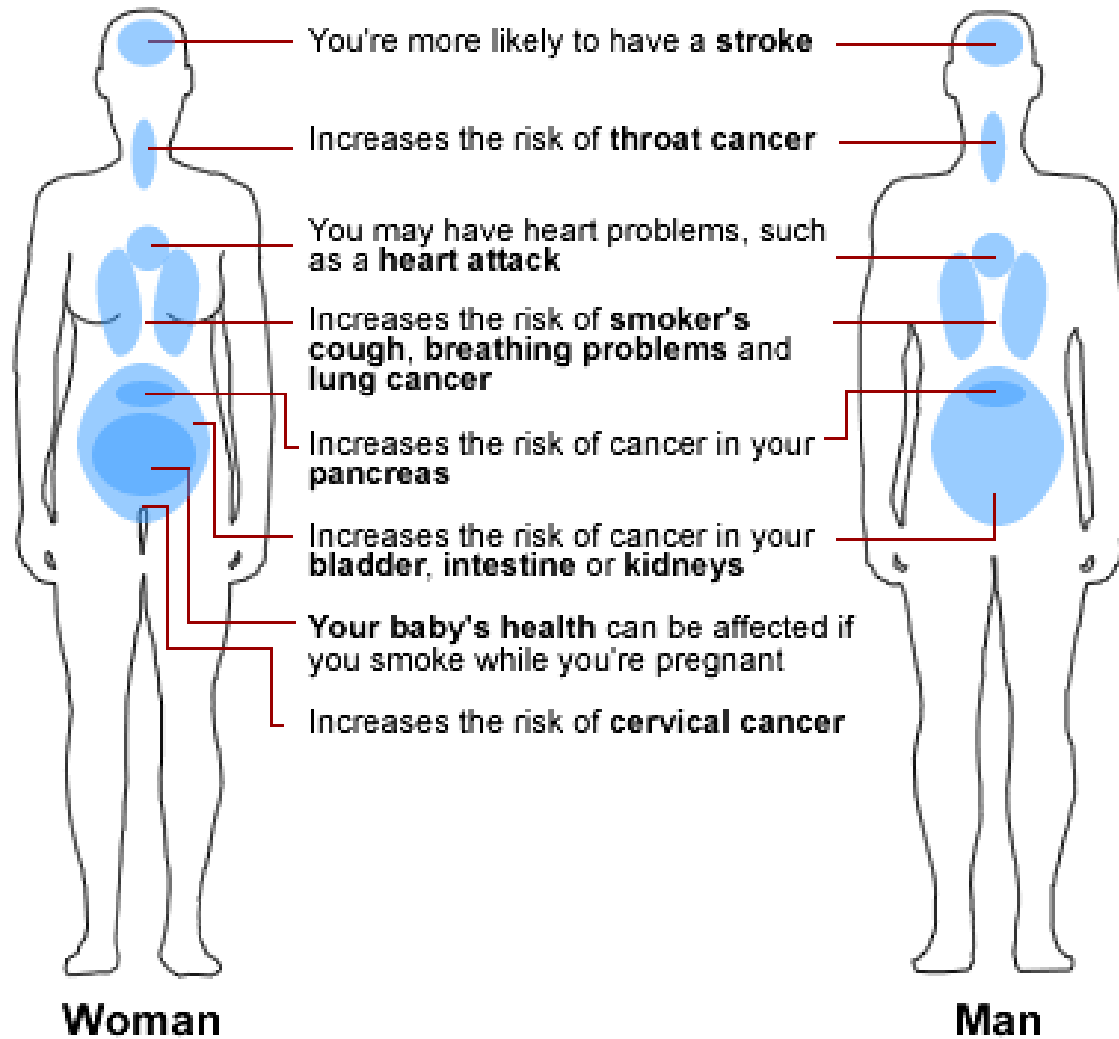
**IMPOTENCE (MEN)  
& INFERTILITY  
(WOMEN)**

**OSTEOPOROSIS**

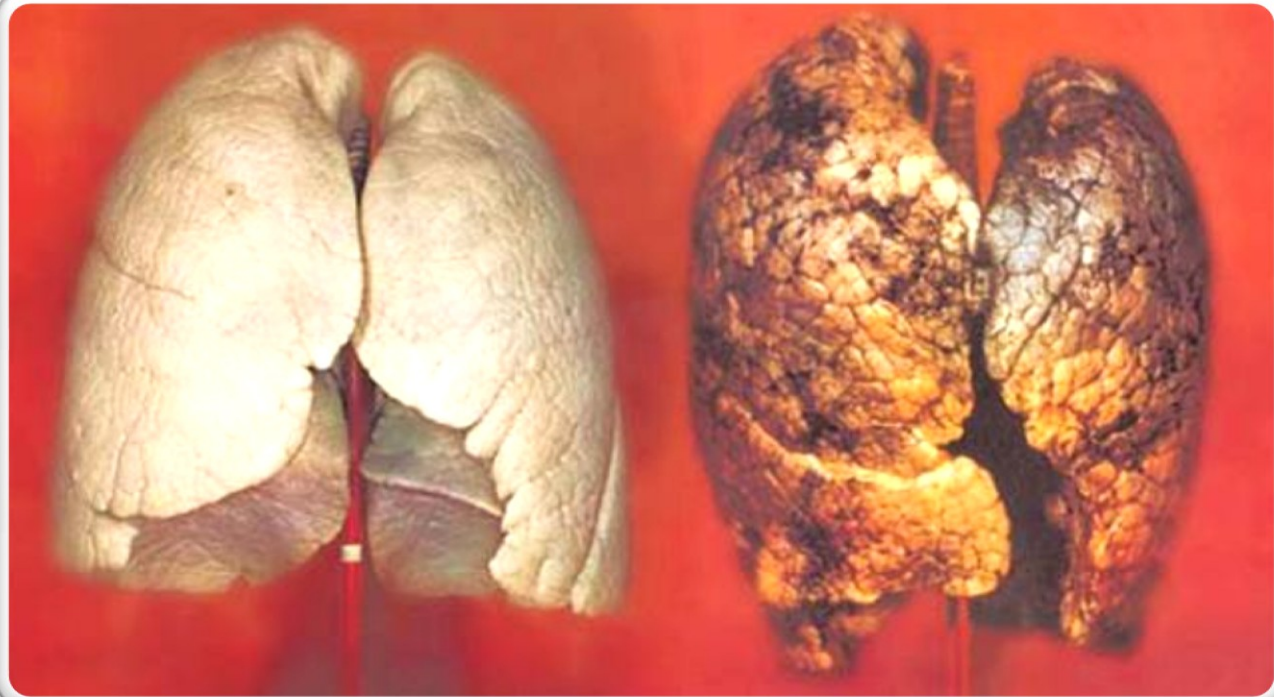
## 1.3 Smoking and nicotine addiction

- rise up very fast – dependence on a subject
- withdrawal symptoms
  
- in Czech republic 2 300 000 smokers including 250 000 juveniles

## What smoking does to your body



1/3 of tumours  
3/4 of chronic lung diseases





**Now you should  
listen carefully**

## 2.1 How to help

- field social work (programs) – Drop-In, SANANIM
- drop-in centres, open-access service, low-threshold centres – food and health service
- outreach services – greater demands on clients
- day care (day hospitals) – intensive, 2–3 months
- inpatient detoxification – 5–10 days
- psychiatric hospital – residential and rehabilitation service for 3-6 months
- therapeutic community –highest demands, 6 – 18 months
- aftercare service – drug-related support or non-drug-related support
- legal advice
  
- sobering-up station - intoxicated people - one night to become sober (one night in Opava 700CZK, in Kroměříž 12 700CZK)
- another organization for helping people

# 2.2 Activity



## The Story

The story is about Sarah, young single mother who was addict. She was found by police officer. She was drugged and she did disturbance. Police officer wanted to find out her identity and take her to sobering-up station. Because she was drugged obviously. Sarah refused to show her ID card and she didn't want to go to sobering-up station. Sarah had no money there is no way how she could pay for sobering-up station and she left her child alone at home. Sarah had no one who could take care of her child.

Anna is social worker. She is new one in her department and she is full of hope and optimism. Anna has called in Sarah's case. She believe that Sarah want to change herself because of her baby. In case Sarah lost her child she wouldn't have any other motivation for overcoming to addiction of drugs.

Anna really trusts Sarah can manage it. Anna wants find a compromise which is not going to be inconsistent with law, ethical code (codex) and wish of client.

# Rules

Now we are going to separate you into three groups:

- group one is going to represent Sarah, drug addicts
- group two – police officers
- group three – social workers

Now you will have 5 minutes for discussion in groups.

You have to find the best solution for the situation of your group.

- E.g. group one - What is Sarah thinking that is the best solution for her.
- You can write you arguments and ideas. You can

After this you should find the best solution together (discussion between three groups).

# How to help

- field social work (programs) – Drop-In, SANANIM
- drop-in centres, open-access service, low-threshold centres – food and health service
- outreach services – greater demands on clients
- day care (day hospitals) – intensive, 2–3 months
- inpatient detoxification – 5–10 days
- psychiatric hospital – residential and rehabilitation service for 3-6 months
- therapeutic community –highest demands, 6 – 18 months
- aftercare service – drug-related support or non-drug-related support
- legal advice
  
- sobering-up station - intoxicated people - one night to become sober (one night in Opava 700CZK, in Kroměříž 12 700CZK)
- another organization for helping people

# Thx for your attention

